

# **Coventry High School Band**

78 Ripley Hill Rd.  
Coventry, CT 06238

## **Handbook and Contract 2011-2012**

Please visit the CHS Band Webpage at

<http://www.CoventryPS.org/CHS>

**Calendars, Recordings, Current Info,  
Announcements and Resources**

### **Coventry K-12 Philosophy of Music Education**

Music is intrinsic to the complete human being and therefore must be cultivated in all students. Through creating, performing, and responding to music, we will generate an autonomous, musical lifestyle evidenced through tuneful, beatful, and artful expression.

These Artistic Experiences and meaningful opportunities will enrich students' lives as well as the lives of others.

All elements of music require experience above explanation to glean from them the highest artistic experiences. The repertoire of the Coventry Music Programs must be of the highest quality to encourage these deep musical experiences.

*The Band Handbook can be found on the Band Website: CoventryPS.org/CHS  
Under "Activities," Click "Band"  
Click "Students and Parents"*

**CHS Band Contract and Student Info**

We have viewed the Coventry High School Band Handbook and agree to abide by the policies outlined. In addition to the handbook, we have viewed the CHS Band Website and agree to the information contained therein pertaining to student and parent involvement in the CHS Band.

Student (Print Name) \_\_\_\_\_

Student Signature \_\_\_\_\_ Date: \_\_\_ / \_\_\_ / \_\_\_

Parent (Print Name) \_\_\_\_\_

Parent Signature \_\_\_\_\_ Date: \_\_\_ / \_\_\_ / \_\_\_

Student Email: \_\_\_\_\_

Parent Email: \_\_\_\_\_

Primary Phone Number: \_\_\_\_\_

Emergency Contact: \_\_\_\_\_

If you wish to order any of the following items now, please return this contract with cash or a check made out to the *CHS Band*. More information related to these items is included within the handbook.

**Tux Shirt - (Quantity and Size)**

\$12

<u>Women's</u>	<u>Men's</u>
6 - 31/36.5	14
8 - 32/38	14.5
10 - 32/39.5	15
12 - 33/41	15.5
14 - 33/42.5	16
16 - 34/44	16.5
18 - 34/45.5	

**Polo Shirt - (Quantity and Size)**

\$13

Women's Sizes: XS, S, M, L, XL, 2XL, 3XL

Men's Sizes: S, M, L, XL, (2-6) XL

**Sweatshirt - (Quantity and Size)**

\$20 (Band Students), \$25 (All others)

\_\_\_\_\_ XSmall, Small, Med, Large, XLarge

**Post Cards - (Quantity)**

2/\$1

\*\*\*Please **return to Mr. Smith** by Monday Sept. 5th\*\*\*

Please also be sure that you have registered your email address in our electronic database.

## Objectives

1. The Coventry High School Band will offer its members the opportunity and encouragement to lead musical lives as independent musicians, autonomous learners, and artistic human beings.
2. The Coventry High School Band will perform a diverse repertoire of grade-appropriate musical content, encouraging a high aesthetic standard. This content will employ the National Standards of Music Education as guideposts to achieve the deepest musical experience possible.
3. The Coventry High School Band will maintain and promote a sense of community and character that typifies the expectation of the greater Coventry High School community as well as that of the town of Coventry, CT.

## Organization

The **Coventry High School Band** is made of 4 primary instrumental classes: **MU100: Concert Winds** (Woodwinds), **MU 108: Concert Winds** (Brass), **MU 101: Symphonic Winds** (Advanced), **MU 102: Percussion Class** (9<sup>th</sup>-12<sup>th</sup> Percussionists). These 4 classes perform as one ensemble (two as possible) in concerts.

**MU 301: Music Theory** is an academic course focusing on the structure and analysis of music as well as the tools of composition. **MU 302: History of American** provides an overview of American Music dating from the earliest settlements in America to the modern face of American Music. Band students are strongly encouraged to take both the Music Theory Class and History of American music as their schedule allows.

Students are also involved in Chamber Ensembles (small instrumental groups throughout the year), Parade Band (Memorial Day), and the Pit for Musicals (Optional). Students are always encouraged to seek additional opportunities in the Community and Festival Honors ensembles to expand their musicianship.

### **Jazz Ensemble**

**MU 103: Jazz Ensemble** is an auditioned after-school ensemble performing standard and contemporary jazz repertoire. Audition information will be posted during the first week of school for students interested in auditioning into the .25 Credit Jazz Ensemble Course.

Rehearsals continue every **Wednesday from 7-9pm.**

The number of accepted students and the configuration of the ensemble(s) varies based upon student enrollment and auditions.

As an ensemble that meets once a week, only those members who can commit to the schedule will be accepted.

### **Pep Band**

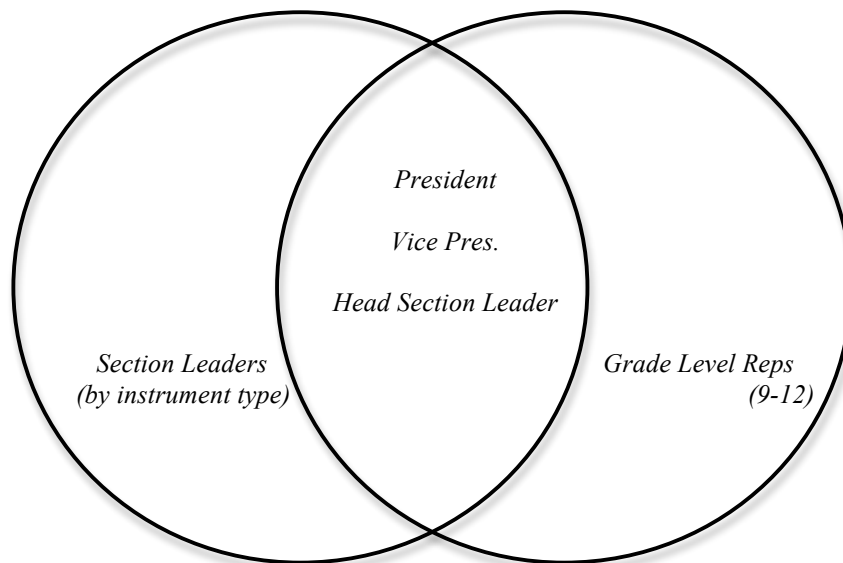
The CHS Pep Band performs at all Home Football Games.

## **Ownership**

The Coventry High School Band is strengthened by a number of student leaders. The Band President and Vice President head the **Band Council** as a student organization that organizes and leads group activities promoting morale, high-standards, and student activities. Full time *Grade Level Reps* speak for their classes when the Band Council Votes.

The **Section Leaders** of the CHS Band are exemplar musicians within each instrumental section who serve as resources and role models for their sections and the band as a whole. Section Leaders maintain an active leadership role by organizing sectionals, maintaining print music, and assisting in the daily functioning of the Band. The Phone Tree of the Band is also run through the Section Leaders when communication is needed.

### **Student Leadership in the Coventry High School Band**



### **Parent Leadership in the Coventry High School Band**

The **CHS Music Boosters** are an independent group of the CHS Music Department consisting of dedicated Band and Choir Parents, Alumni, and Friends of Music who support Coventry's student musicians by assisting through Public Relations, Financial Support, and the General Organization of the Music Departments Activities.

[CoventryMusicBoosters@gmail.com](mailto:CoventryMusicBoosters@gmail.com)

**A consistent meeting time will be announced via email**

## Attendance

Absences during the school day will be handled consistent with the policies of the Coventry High School Handbook.

The CHS Band will hold rehearsal on  
**Thursday night from 7-9pm,**  
unless specified otherwise.

### **All scheduled rehearsals and performances are mandatory.**

Dates are set well in advance and made public in a multitude of formats, please plan accordingly.

**Not having a ride is not an excuse**, there are a number of parents and peers willing to carpool.  
Please plan accordingly.

### **In the event of an unavoidable absence:**

Excused Absence Forms must be turned in *at least*

1 Week before a Rehearsal and at least 1 Month before a performance.

### **Illness/Emergency Absences**

from required events should be explained promptly by a doctor's note or parental phone call.

An unexcused absence will lower a student's final grade for the quarter  
by one level (B to a B-)

*The entire CHS community strives to align all schedules and activities within the school so as to preemptively eliminate inter-school conflicts. As such, if school-related conflicts do arise (athletics, class trips, etc.), they will be dealt with in such a manner as to best serve the interests of the student and Coventry High School.*

### **No Music/No Instrument**

We all forget things sometimes, however if it becomes a habit, it is detrimental to the Band's success.

In addition to lowering your participation grade for the day, after the 2<sup>nd</sup> time forgetting your music or instrument, a short presentation on a selected music topic will be prepared and shared with the class.

## **Additional Information**

**Daily Materials Needed:** Instrument with needed supplies\*, Folder (Provided by CHS)  
complete with Music and Warm-ups/Exercises, Pencil, 3-Ring Binder for "BandBook"

*\*In addition to the generic supplies for your instrument, music at the High School level will often call for more advanced supplies such as mutes, if you have questions about which mutes are right for you, please just ask!*

\*\*\*It is *strongly recommended* that all students have access to a metronome and tuner to enhance practicing. A very economical possibility is the **BOSS TU 80 Metronome/Tuner, which** can be purchased or ordered at most music stores for about \$30.

***Performance Attire:***

*Concert Band:* White, Ribbed Tux Shirt (\$12 if ordered through band)  
Black Pants/Long Skirt, Black Socks, and Black Shoes

(Bow Ties and Cummerbunds provided by CHS Band)

\*From time to time, the concert band will vary its performance attire if there is a unique performance.

*Marching Band :* The CHS Band marches in the Town Memorial Day Parade wearing a **CHS Band Polo** Shirt (\$13) and Black Pants.

*Pep Band:* As much green and gold as you have! **CHS Band Sweatshirts** are a great way to show your spirit and stay warm!

~ ~ ~

***School Instruments:*** School instruments are available per request for use by students. All students must provide their own mouthpiece for the instrument. Students who sign instruments out assume ownership responsibilities of the instrument – any repairs needed as a result of student possession must be financed by the individual. Please see Mr. Smith for an *Instrument Sign-out Form*.

***Borrowed Equipment:*** The CHS Band is fortunate to have good resources available for student learning. Beyond the instruments which some students will be using there is a good collection of books, recordings, metronomes, tuners, and other music resources. At all times, please ask before using or taking something and sign it out with Mr. Smith. Both in school and out of school: you break it, you buy it.

***Private Instruction/Resources:***

**Song-a-Day Music Center**  
Coventry, CT - (860) 742-6878

**Music & Arts Centers**  
Order forms available in Bandroom  
*Vernon* - (860) 648-9178

**The Hartt School Community Division**  
(860) 768-4451  
www.hcd.hartford.edu

**UConn Community School of the Arts**  
(860) 486-1073  
www.continuingstudies.uconn.edu/csa

**Numerous Local Teachers and Schools provide private lessons,  
Contact Information is always posted in the Bandroom.**

~ ~ ~

***Fundraising/Activities:*** Throughout the year, fundraisers are held and individual accounts are maintained to offset the cost of any traveling or activities the band may participate in.

**Mr. Smith's Email:** NSmith@coventryct.org

**Band Website:** <http://www.coventryps.org/chs/activities/band/band.html>

## **ASSESSMENT**

Primary responsibility in the Bandroom:

**LISTEN**

...and bring a pencil...

**Music** - All music must be prepared. Rehearsal is not the time to learn your part; it is the time to learn everyone else's part and see how yours relates. Music preparation is assessed through Playing Tests, "Spot Check" Rubrics, and Specific Practicing Assignments.

**Attendance, Behavior and Professionalism** – In addition to being present for all required activities; all needed materials must be present as well (mouthpiece, reed, neckstraps, valve oil, sticks/mallets, music/warm-ups, pencil). To assist the students, lockers and folders are assigned to all band members.

*Mutual respect* is the rule of thumb for dealing with students, teachers, and guests in the classroom. Participation in rehearsal and learning must be cooperative and constructive. Completion of any assignments, returning of paperwork or payments, and notification of absences/schedule conflicts must be prompt. Please no gum in the Bandroom.

Professionalism on and off the stage is to be maintained at all times. This includes behavior and dress for all rehearsals, concerts, and band activities.

Self-reflection and peer evaluation will be used by the students to self-assess the groups progress

**Academics** – Program Notes or a similar assignment will be written by all students for concert repertoire and presented at concerts. Similarly, each set of concert pieces will usually feature at least 1 large-scale academic project related to that concert's repertoire (graded in accordance with the CHS Mission Statement). Smaller projects will include listening assignments, reflections on concerts and rehearsals and a variety of other enriching activities.

### **Growth, Initiative, Effort**

Improvement in Skills and knowledge can be demonstrated in a variety of ways and will be manifested in each student differently.

Opportunities to demonstrate personal initiative in the arts and in civic life abound. It is expected that students seek out extra help (lessons – either during study halls, after school, or privately), give assistance to their peers, perform as often as possible, attend performances in the school or community, audition for music festivals and demonstrate the drive to grow as artists and human beings.

**Please visit the Band Webpage to gain access to MyGradebook.com information.**